

SmartMicroScope iGo2 Quick Start Guide

iOS Install:

1. Visit the App Store and search for the app “Wi-Viewer HD Pro”
2. Install “Wi-Viewer HD Pro”

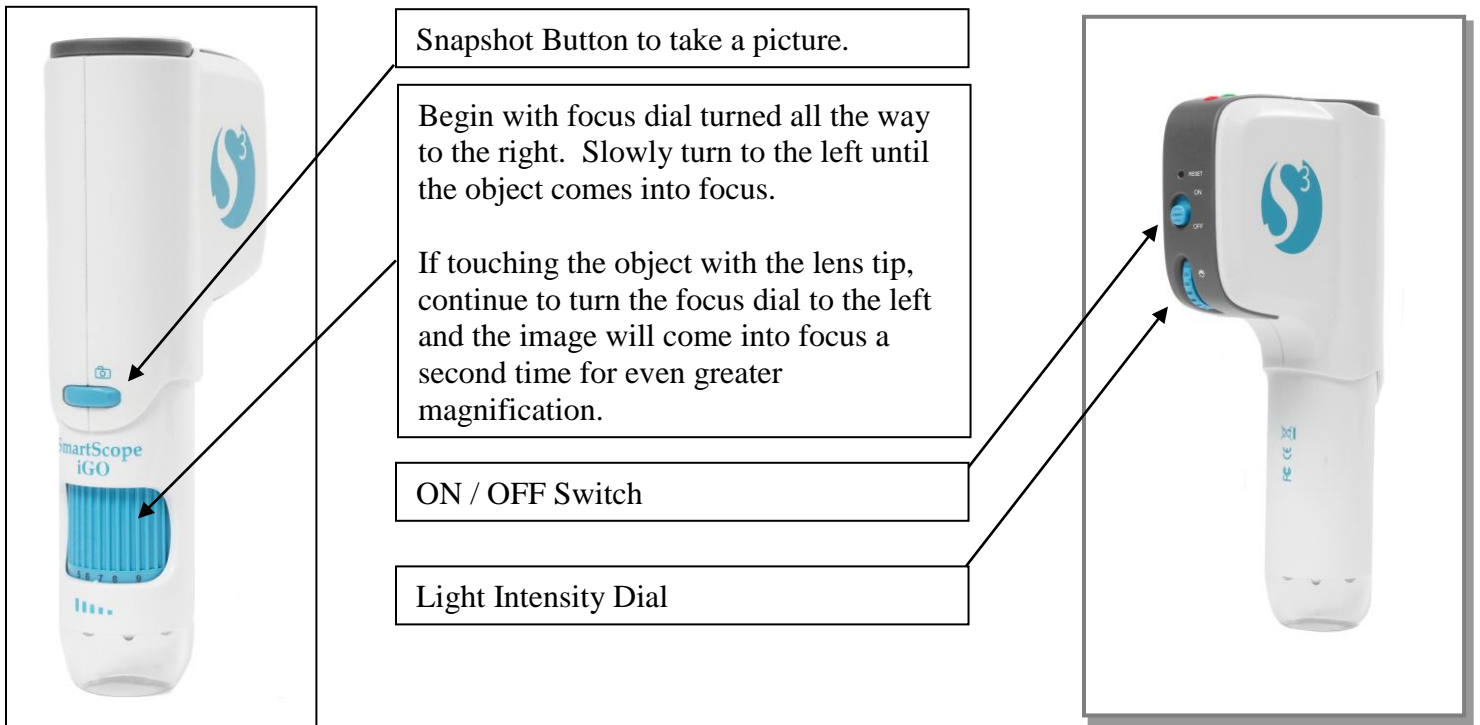
Android Install:

1. Visit the Google Play Market and search for the app “Wi-Viewer HD Pro”
2. Install “Wi-Viewer HD Pro”

NOTE: Please charge batteries for eight hours before the first use.

- A. Open the battery door on the SmartMicroScope iGo2 and make note of the SSID.
- B. Turn the SmartMicroScope iGo2 on and leave on for about 10 seconds.
- C. Turn the tablet on and go to SETTINGS and choose WiFi.
- D. Choose the network SSID from the inside battery cover.
- E. Password is “12345678”
- F. After connected, go to the HOME screen and open the application.

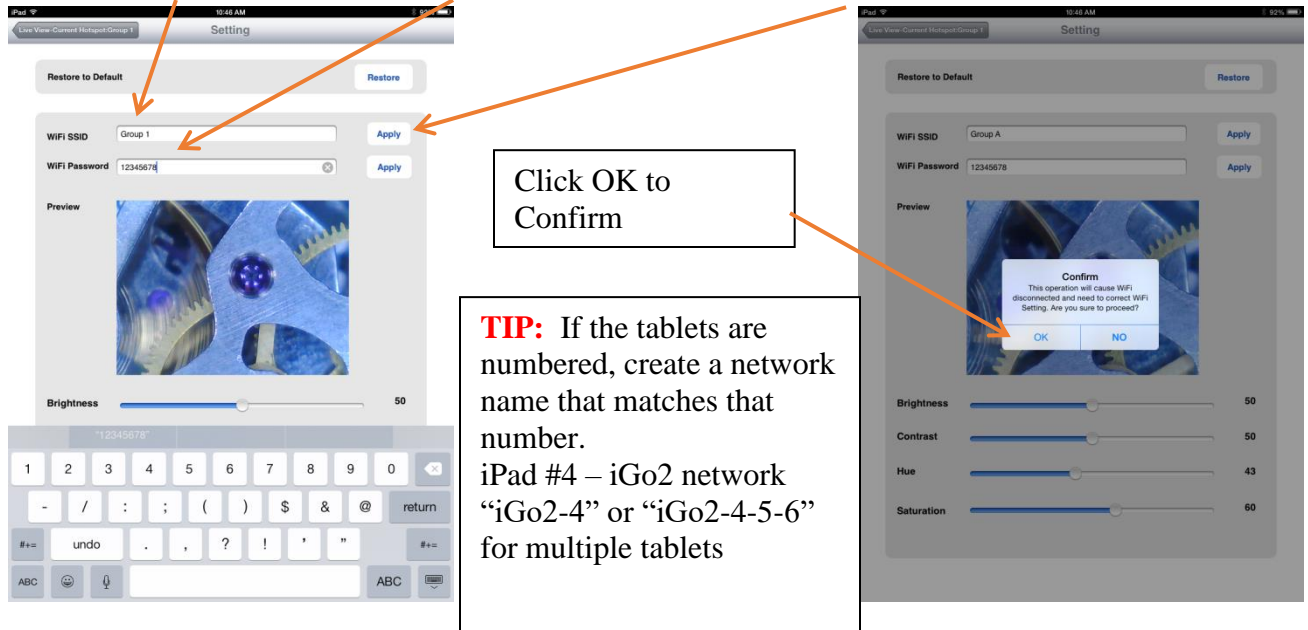
***** iOS devices ONLY: Touch the ON button on the bottom left of the screen to get the live image.



*****Technical support, please call 281-312-1297, 1-866-722-2051 or email support@smartschoolsystems.com

How to set up multiple iGo2 in a single classroom

1. Turn on ONE iGo2 and connect it to ONE tablet
2. Within the APP, click the SETTINGS button on the top right.
3. Create a new network name and password that works for your class. Click APPLY to the right of the name.



4. The iGo2 will disconnect at this point. Press the HOME button on the iPad and go to WiFi Settings and choose the new network and password you just set up.
5. Open the Wi-Viewer APP and click ON to view the live image.
6. Place a sticker or label on the iGo2 with the network name.
7. Repeat this process for each iGo2 in the room giving each one a unique name (Group 1, Group 2, etc.).

TIP: Confusion sets in when multiple tablets can connect to multiple iGo2s automatically. If this happens, turn on all the iGo2s and all of the tablets. On the tablets, go to SETTINGS and then WIFI. Choose each network that DOES NOT BELONG TO THAT TABLET and “Forget” each one so they cannot automatically connect to different iGo2s. *****If this continues to happen, create unique passwords for each iGo2 network and do not provide the passwords to students.

*******Technical support, please call 281-312-1297, 1-866-722-2051 or email support@smartschoolsystems.com**

1-866-722-2051



www.SmartSchoolSystems.com