



SMARTSCHOOL
s y s t e m s

www.smartschoolsystems.com

SMARTSENSE ONE LINK



ONE LINK
is affordable
and versatile.

The ONE LINK is an economical interface with a single sensor input, powered by the computer's USB port.

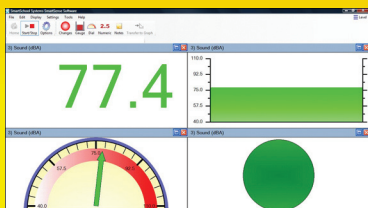
- Auto identifies and calibrates when plugged in.
- Datalogging Software - *full version site license*
- Compatible with all of our sensors
- No batteries needed - *powered by USB port*
- Easy to use software
- Capable of very fast logging - *up to 50,000 samples per second*



866.722.2051 | email: info@smartschoolsystems.com

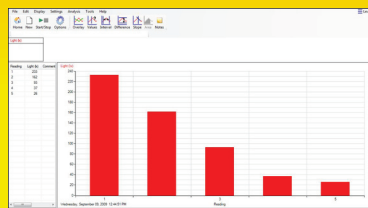
SMARTSENSE

software is user-friendly and versatile



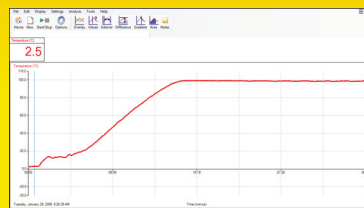
Meters

How loud is my classroom?



Bar Graph

Compare light levels



EasyLog

Record data over time.

The ONE LINK comes with:

- SMARTSENSE Software Site License
- Mini USB Cable
- Sensor Cable
- Software Quick-Start Guide

More Investigations...



Test the pH of different solutions.

At what temperature does water boil?



Additional Sensors:



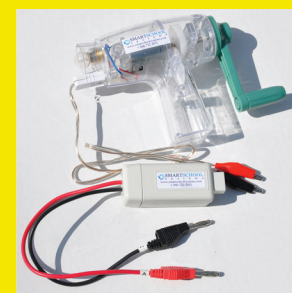
Conductivity



Heart Rate Sensor



Sound Level



Voltage Sensor and Generator

Over 40 external sensors are available for the ONE LINK. Including:

- Carbon Dioxide
- Colorimeter
- Conductivity
- Current
- Drop Counter
- ECG
- Force
- Geiger Muller
- Heart Rate
- Heat Flow
- Humidity
- Infra Red
- Light Sensor
- Magnetic Field
- Motion
- Oxygen
- pH
- Photogates
- Push Button Switch
- Pressure Sensors
- RF Electromog Sensor
- Sound Level
- Spirometer
- Rotary Motion
- Thermocouple (Type K)
- Temperature
- UV
- Timing Mats
- Voltage